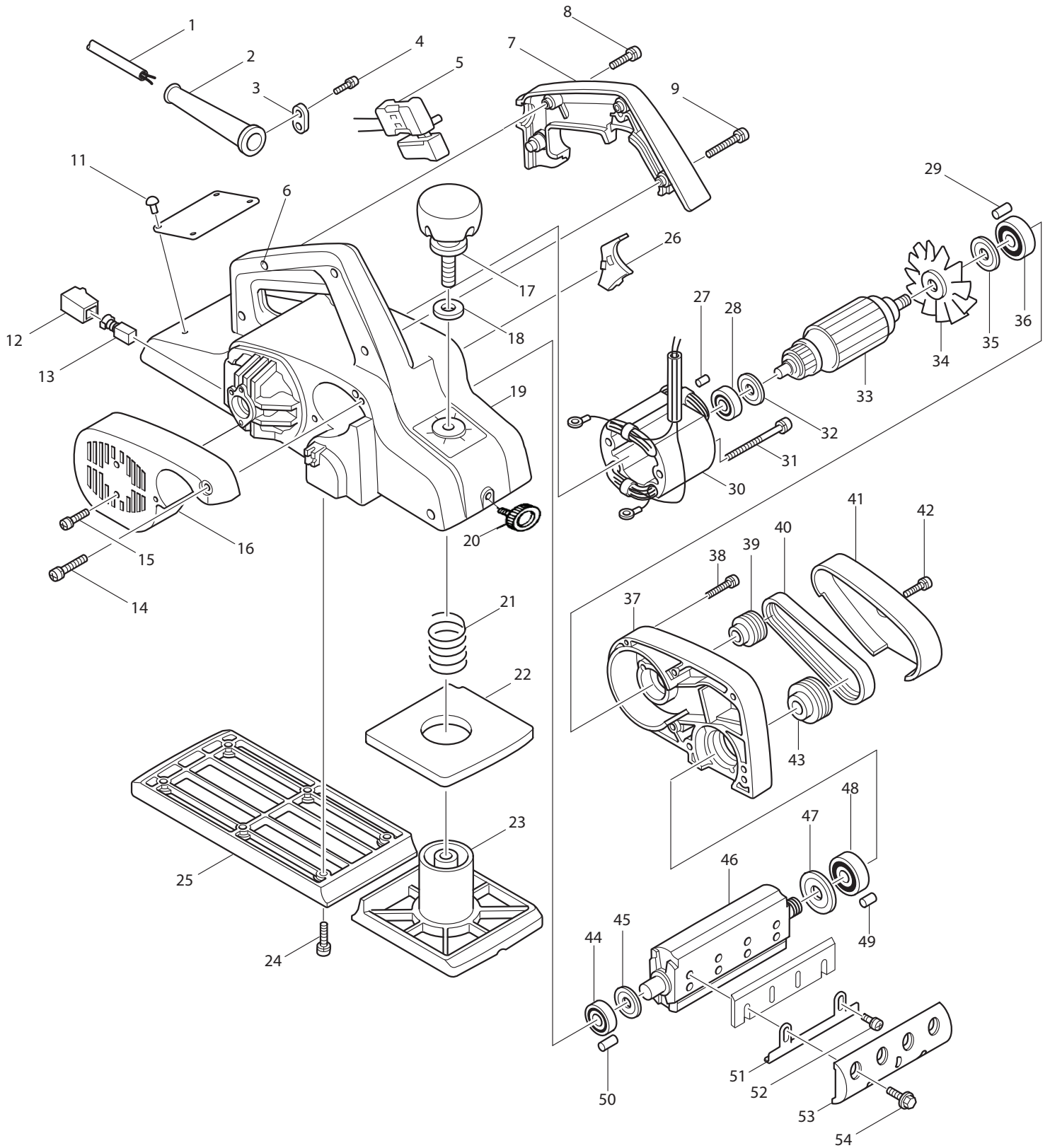




04 - 2010
1911B
4-3/8" PLANER



Item No	Type	Ref	Part No	Description	Qty	Unit
001			660023-6	CORD W/PLUG 2P-18-5.0M, SJ (OLD#664013-1)	1	PC.
002			682502-4	CORD GUARD 8-85	1	PC.
003			687063-9	* CORD CLAMP (STRAIN RELIEF)	1	PC.
004			911133-5	PAN HEAD SCREW M4X18	2	PC.
005			651225-5	* SWITCH (TRIGGER) W/ LOCK-ON BUTTON	1	PC.
006			931102-0	HEX NUT M4	4	PC.
007			414538-3	* HANDLE COVER W/HOLE	1	PC.
008			911153-9	PAN HEAD SCREW M4X28	3	PC.
009			911168-6	PAN HEAD SCREW M4X40	1	PC.
010	2		853285-5	NAME PLATE F/ 1911B	1	PC.
011			953106-2	* RIVET 0-5 (Old)	4	PC.
012			643601-7	BRUSH HOLDER 6-10	2	PC.
013	2		194977-0	CARBON BRUSH CB-107 2PC/SET (W/ ORIGIN)	1	SET
	Opt.2		194978-8	A.C. CARBON BRUSH CB113 2PC/SET (W/ ORIGIN)	1	SET
014			911168-6	PAN HEAD SCREW M4X40	1	PC.
015			911123-8	PAN HEAD SCREW M4X14	2	PC.
016			410438-5	* REAR COVER	1	PC.
017			271226-3	KNOB 50	1	PC.
018			941251-5	FLAT WASHER 10	1	PC.
019	1		159689-2	* MAIN FRAME	1	PC.
	2		142924-5	* MAIN FRAME COM.	1	PC.
		INC.	816382-8	SCALE LABEL	1	PC.
020			251812-6	SCREW M5X10 (Old)	1	PC.
021			231004-3	COMPRESSION SPRING 18	1	PC.
022			421147-1	RUBBER PACKING	1	PC.
023			312951-8	FRONT BASE	1	PC.
024			911226-8	PAN HEAD SCREW M5X18 (OLD#911231-5)	6	PC.
025	1		312952-6	* REAR BASE	1	PC.
	2		319148-0	* REAR BASE	1	PC.
026			411428-1	BAFFLE PLATE	1	PC.
027			263014-2	* RUBBER PIN 4 (Old)	1	PC.
028			211031-6	BALL BEARING 608LLB	1	PC.
029			263002-9	RUBBER PIN 4	1	PC.
030	2		594486-3	* FIELD ASS'Y 115V (OLD# 522416-4 - N/L/A)	1	PC.
		INC.	654037-5	* INSULATED EYE TERMINAL FT1.25-M3	2	PC.
031	1		911290-9	* PAN HEAD SCREW M5X65	2	PC.
	2		911295-9	* PAN HEAD SCREW M5X70	2	PC.
032			681613-2	INSULATION WASHER (OLD# 681603-5 - N/L/A)	1	PC.
033			516081-9	ARMATURE ASS'Y 115V	1	PC.
033		INC.		Item No. 28,32,34,35,36		
034	1		241044-3	FAN	1	PC.
	2		241519-2	FAN 68	1	PC.
035			213051-6	DUST SEAL 10	1	PC.
036			211066-7	BALL BEARING 6200LLB	1	PC.
037			152362-3	* BRACKET	1	PC.
037		INC.		* Item No. 29,49		
038			911158-9	PAN HEAD SCREW M4X30	6	PC.
039			222050-7	V-PULLEY 4-24L	1	PC.
040			225069-5	* POLY V-BELT 4-272	1	PC.
041			411426-5	BELT COVER	1	PC.
042			911123-8	PAN HEAD SCREW M4X14 (OLD# 911128-8)	1	PC.
043			222063-8	V-PULLEY 4-38	1	PC.
044			211062-5	BALL BEARING 6000ZZ	1	PC.

Item No	Type	Ref	Part No	Description	Qty	Unit
045			341389-0	WASHER 10	1	PC.
046			161119-1	* DRUM	1	PC.
047			341377-7	WASHER 12	1	PC.
048			211107-9	BALL BEARING 6201ZZ	1	PC.
049			263005-3	RUBBER PIN 6	1	PC.
050			263002-9	* RUBBER PIN 4 (Old)	1	PC.
051	1		345157-3	* BLADE HOLDER	2	PC.
	2		341601-8	* ADJUSTING PLATE	2	PC.
052	1		911106-8	* PAN HEAD SCREW M4X8	4	PC.
	2		251246-3	* + PAN HEAD SCREW M4X5	4	PC.
053	1		345156-5	* DRUM PLATE - Remain Active	1	PC.
	3		187674-5	DRUM PLATE (2PCS/SET)	1	SET
054			251609-3	HEX. FLANGE HEAD BOLT M6X17	8	PC.
055			232065-6	* LEAF SPRING (Old)	2	PC.
056			321346-4	* PIN (Old)	2	PC.
057			961017-7	* STOP RING E-3 (Old)	1	PC.
058			321347-2	* STOPPER PIN (Old)	1	PC.
059			231303-3	* COMPRESSION SPRING 5 (Old)	1	PC.
060			256714-1	* PIN 2 (Old)	1	PC.
061			252415-9	* NUT N4-12 (Old)	1	PC.
066			267012-8	* FLAT WASHER 5 (Add)	2	PC.
067			231698-4	* TORSION SPRING 7 (Added)	1	PC.
068			451392-4	* FOOT (Added)	1	PC.
100			819063-3	MAKITA LABEL	1	PC.
200			652257-5	CLAMP WASHER TYPE 1 (F/SWITCH)	4	PC.
201			652008-6	P.H. SCREW M3.5 X 7 (F/SWITCH)	4	PC.
C01			876822-8	CARTON F/1911B	1	PC.

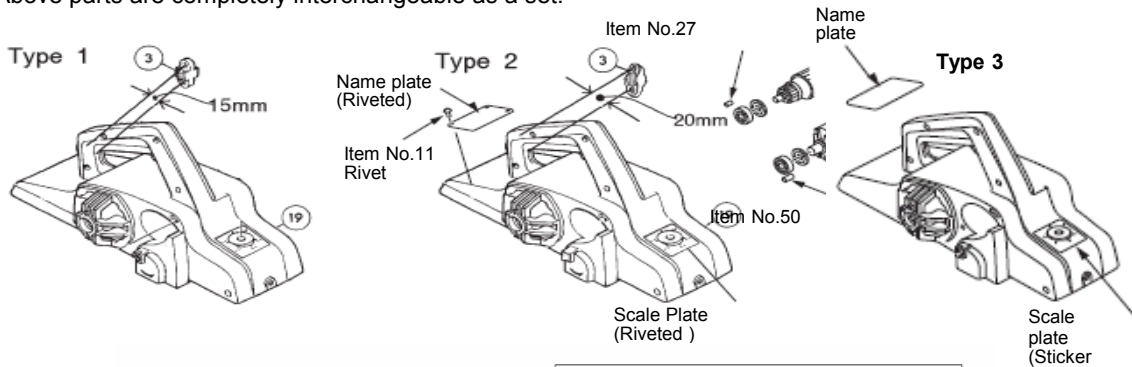
ACCESSORIES

A01			123055-9	SHARPENING HOLDER ASS'Y	1	PC.
		INC.	934301-3	WING NUT M6	2	PC.
		INC.	251920-3	CAP SQUARE NECK BOLT M6X30	2	PC.
		INC.	341390-5	PRESSURE PLATE (N/A as individually)	1	PC.
A02	3		123010-1	* BLADE GAUGE ASS'Y - PKG	1	PC.
		INC.	411086-3	* GAUGE PLATE	1	PC.
		INC.	911228-4	* PAN HEAD SCREW M5X18	2	PC.
A03			794061-7	DRSSNG STONE 150-1200, 7 LANG.	1	PC.
A04	1		793008-8	PLANER BLADE 110	1	SET
	2		D-71211	HSS PLANER BLADE 110	1	SET
A05			782209-3	SOCKET WRENCH 9	1	PC.
A06			191455-1	GUIDE RULE SET	1	PC.
		INC.	251812-6	SCREW M5X10	1	PC.
A07			122402-1	DUST BAG ASSEMBLY	1	PC.

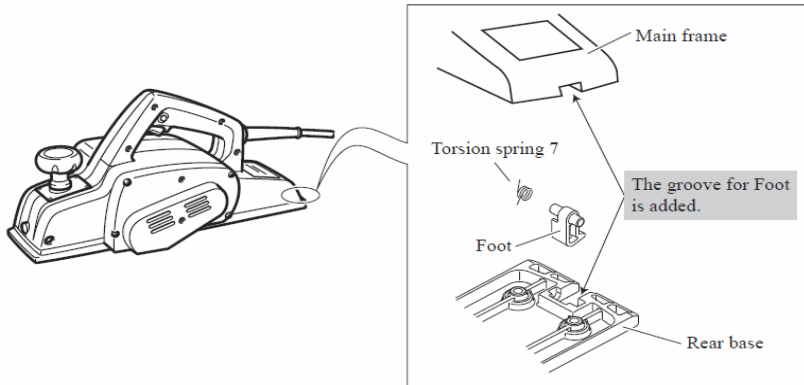
SERVICE CHANGES

019	Main Frame Com.	157934-9 (N/L/A)	159689-2	159689-2 (Part No. remains the same)	142924-5
027	Rubber Pin 4	263014-2 (or 263013-4)		-----	
050	Rubber Pin 4	263002-9		-----	
011	Rivet 0-5	953106-2		-----	
025	Rear Base	312952-6			319148-0
067	Torsion Spring 7	-----			231698-4
068	Foot	-----			451392-4

Above parts are completely interchangeable as a set.



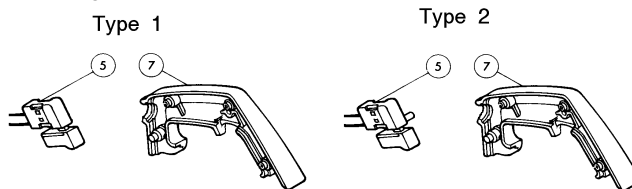
Type 4



4. Changes on Switch and Handle Cover

Item No.	Description	Type 1	Type 2
005	Switch	651229-7 (W/O Lock-on Button)	651225-5 (W/ Lock-on Button)
007	Handle Cover	414273-3 (No Hole) - N/L/A	414538-3 (W/ Hole)

Above parts are completely interchangeable as a set.



5. Changes on Switch and Handle Cover

Item No.	Description	Type 1	Type 2
053	Drum Plate	345156-5	344442-1
	Serial No.	~ 201072E	201073E ~

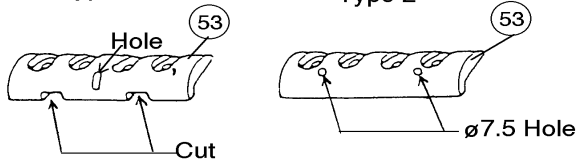
Above parts are completely interchangeable as a set.

Models before Serial No. 162999E - use Type 1 Drum Plate.

Type 1

Type 2

SERVICE CHANGES



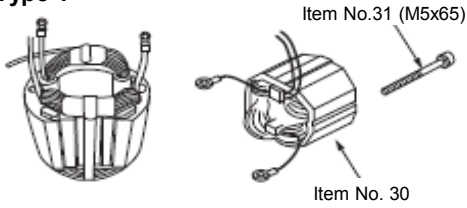
6. Changes on Field Assy, P.H. Screw and Addition of Washer

Item No.	Description	Type 1	Type 2
030	Field Assy	522416-4	594486-3
031	P.H.Screw	911290-9 (M5X65)	911295-9 (M5X70)
066	Flat Washer 5	-----	267012-8

Above parts are completely interchangeable as a set.

****See Wiring change on T/I# 66915**

Type 1



Type 2

